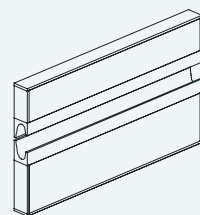




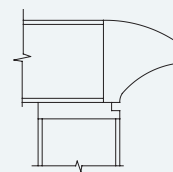


WOODSIDE U-SHAPE WALL UNIT

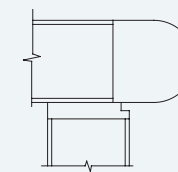
Woodside, W1 edge, peninsula run off/crt with wood and column leg, "C" standard pull.



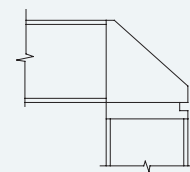
"C" Pull



W1 Edge



W2 Edge

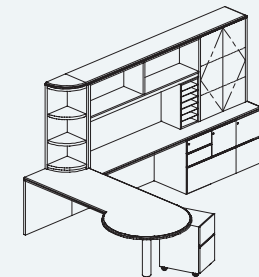
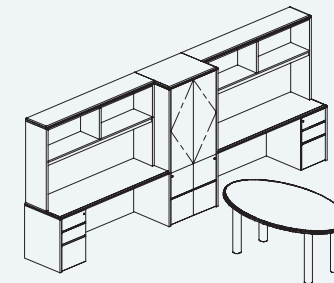
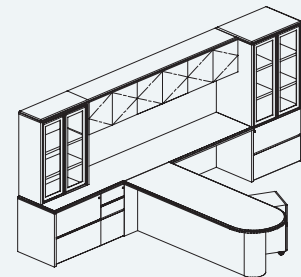
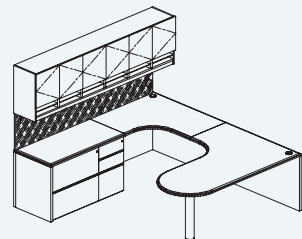


W3 Edge



### WOODSIDE TABLE DESK AND CREDENZA

Woodside W1 edge, standard "C" pulls, custom 4" square legs and custom base moulding.



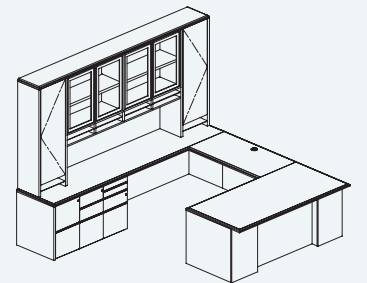
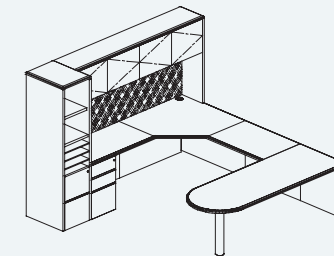
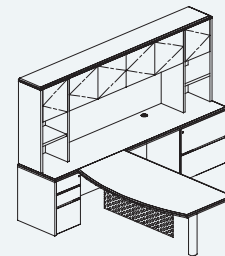
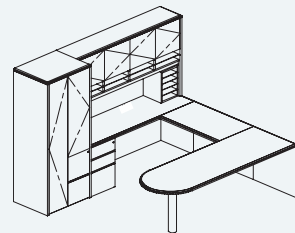


Shown with optional brushed aluminum "S" (Wave) pulls.



## WOODSIDE CHARACTERISTICS

- 1-1/4" thk top with solid bands.
- Top over end panel construction.
- Flush wood pulls standard.
- Edge detail on all four sides with mitered corners.





W O O D T E C H

4611 Malat Street >>> Oakland, CA 94601 >>> tel: 510.534.4930 >>> fax: 510.534.6389 >>> [www.woodtechonline.com](http://www.woodtechonline.com)